



## RIVER PARRETT AT BRIDGWATER OUTFALLS INSPECTIONS

**Wessex Water needed help to carry out the inspection of eleven outfalls on the River Parrett near Bridgwater.**

The resulting report was the basis of a maintenance plan to prevent serious flooding caused by the failure of tide flaps, either through the inability to discharge storm flows or river flows entering the sewage system.

### Project Delivery

- One surface water outfall and 10 sewage pumping stations inspected
- Outfalls were accessed via the river bank or from a safety rib provided by Land & Water to ascertain the condition and level of siltation
- Care was taken to ensure bio security and no cross contamination of native/non-native or invasive/protected species

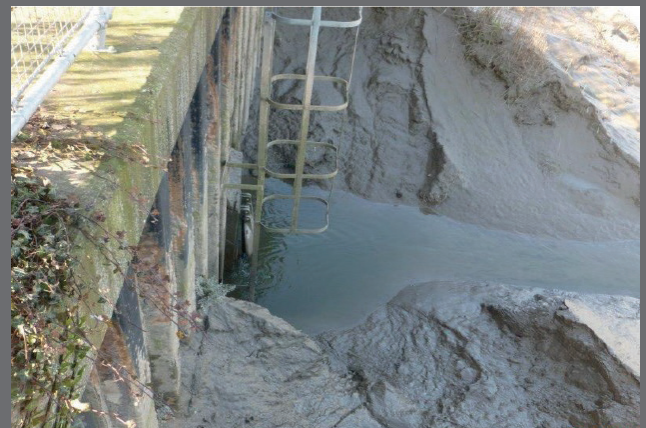
**This important work was completed to the satisfaction of the client.**



Find us on the internet at  
[www.land-water.co.uk](http://www.land-water.co.uk)

Contact us on 0844 225 1958

The Land & Water Group are award-winning inland waterway and coastal project specialists based in the UK. Throughout their 37-year history, they have become synonymous with finding creative and effective solutions to complex challenges in the specialist environment where land and water meet. Often working in difficult or unpredictable landscapes, their work is always completed with attention to the local surroundings, people and environment.



### Project Particulars

- The project was completed for Wessex Water
- The works were completed in 2015
- Outfalls inspection project
- Safety rib employed for access



PROJECT  
VALUE:

£12,000