

THURROCK BERTH DEEPENING

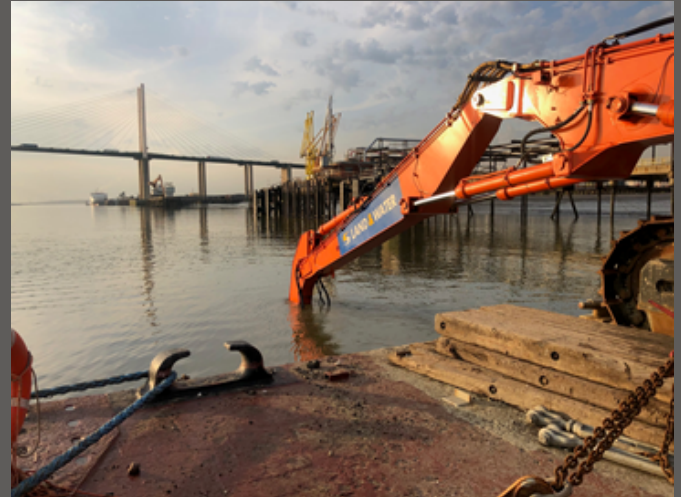
Dredging works were required to increase the depth of the berthing pocket at Thurrock on the River Thames; this was a strategic and busy jetty being made ready to accept deeper drafted vessels.

Part of the solution was to use water injection dredging (WID) to remove sediment however, sampling and analysis showed pockets of contaminated material which required an accurate and contained method of removal. The WID solution failed to reach the required dredge depth and Land & Water were employed to complete the rest of the dredging and, with an environmental cut-off date to the project, Land & Water increased its operations by employing two dredge teams and extending the reach of the excavator arm.

Land & Water using its ZX690 long reach excavator, the largest in its fleet, dredged down to -13.5m CD in designated locations using GPS dig systems to work to minute tolerances and accuracy. This was made more difficult when operating against the fast-flowing tide of the river.

The route to disposal was a huge part of this project and Land & Water were able to dispose of the hazardous material from this location and transport to our site at Rainham Marshes, reducing cost but also adding an environmental advantage as Rainham is a habitat creation site in transformation.

Working within MMO licence constraints, with other contractor vessels on site and an on-off working pattern to accommodate discharging vessels at the jetty, Land & Water removed over 11,500 tonnes of material to increase capacity at the jetty.



Project Particulars

Client: Navigator Terminals
August - September 2020



PROJECT VALUE: **£1.4M**