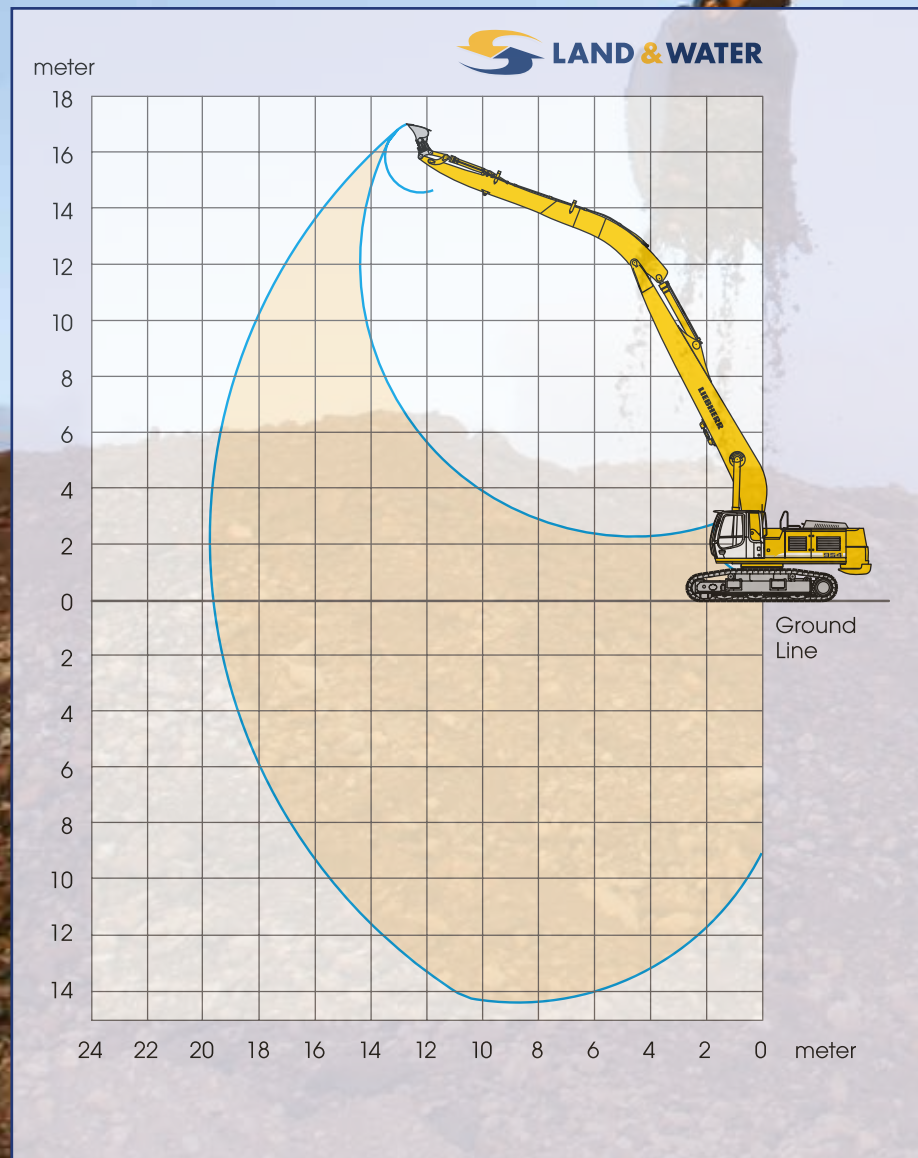


# 55 TONNE LONG REACH

OPERATION WEIGHT	MAX HEIGHT	MAX LENGTH	MAX WIDTH	MAX DIG REACH	MAX DIG DEPTH	MAX CUT HEIGHT	MAX BUCKET M <sup>3</sup>
55 Tonne Long Reach	3.75m	16.3m	3.72m	19.6m	14.3m	17.05m	1.8m <sup>3</sup>

Weighing in at 55 tonnes, the 954 fills the last gap in Land & Water's hire fleet between its 40 tonne and 80 tonne excavators and offers an exceptional breakout force and productivity for an excavator that is relatively easy to haul around the country.



**0844 225 1958**  
[www.land-water.co.uk](http://www.land-water.co.uk)