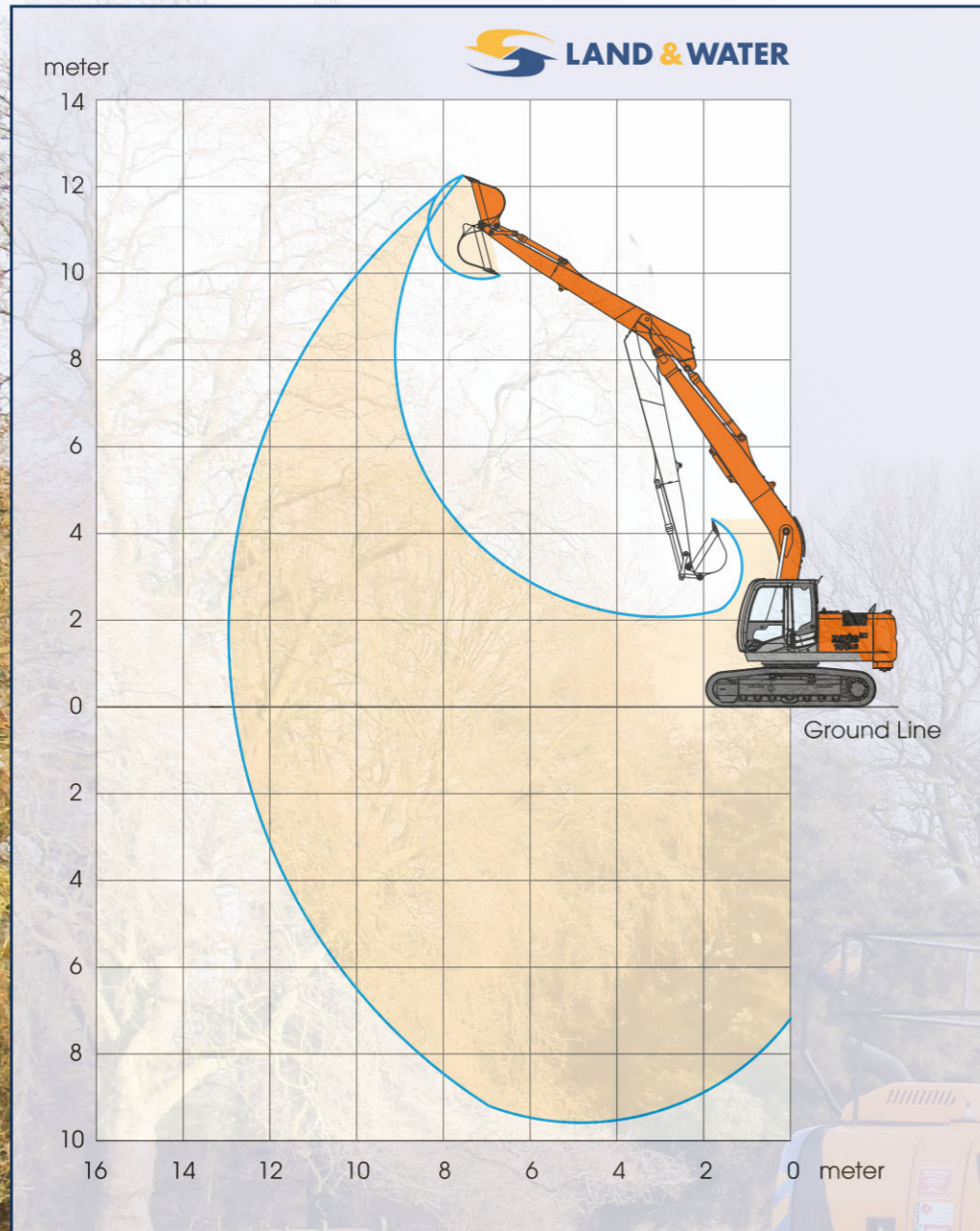


17 TONNE LONG REACH

OPERATION WEIGHT	MIN HEIGHT	MIN LENGTH	MIN WIDTH	MAX DIG REACH	MAX DIG DEPTH	MAX CUT HEIGHT	MAX BUCKET M ³
17 Tonne Long Reach	3.08m	10.5m	2.7m	12.86m	9.58m	12.26m	0.4m ³

Some of the lightest Long Reach excavators of their class, which can access smaller sites and still provide superb productivity.



0844 225 1958 (Option 2)

www.land-water.co.uk